

Date: **August/7/2024**

Addendum No. 02

RFQ-ES-2024-1

Title: Supply & install four (4) VHF analog/digital radio repeaters for Kincardine Fire and Emergency Services

Submission Deadline: Bids must be received by 2:00 pm Eastern time on August 8 2024

This addendum will form a part of RFQ-ES-2024-1 (the "RFQ") and must be read in conjunction with it. In the event of any conflicting or inconsistent information, this addendum will take precedence over all requirements of the original RFQ document and any addenda issued previously.

Bidders must acknowledge receipt of this addendum, in the field requested, when submitting their Bid.

I) Product quantity update:

It has been identified that Kincardine Fire & emergency Services current radio system requires a repeater for paging and a repeater for radio communications. This set up requires two (2) repeaters at each water tower. KFES is looking to replace the existing repeaters with the same configuration of new repeaters.

II) Questions and Answers:

The following questions have been received, with the responses noted below. All information provided below forms part of the Bid solicitation document and is deemed to be included in your Bid.

Question #1: Is there more information you can provide as to the physical location of the repeaters at the sites? Are they rack mounted?

Answer #1: Repeater and radio equipment are located in municipal owned brick buildings located at or near the base of the water towers.

Question #2: Can you provide information as to where the lightning arrestors are?

Answer #2: There is a lightning arrestor at the Tiverton location. No visible lightning arrestor at the Kincardine location

Question #3: Are there separate antennas for the VHF and paging systems?

Answer #3: NO

Question #4: Can you share photos of the sites?



Answer #4:

Figure 1 Tiverton location



Figure 2 Tiverton location

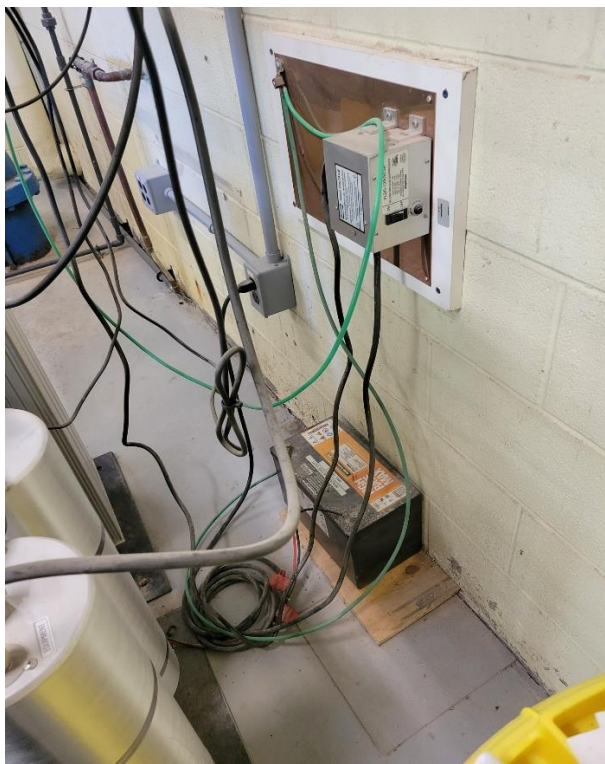


Figure 3 Tiverton location



Figure 4 Tiverton location



Figure 5 Tiverton location

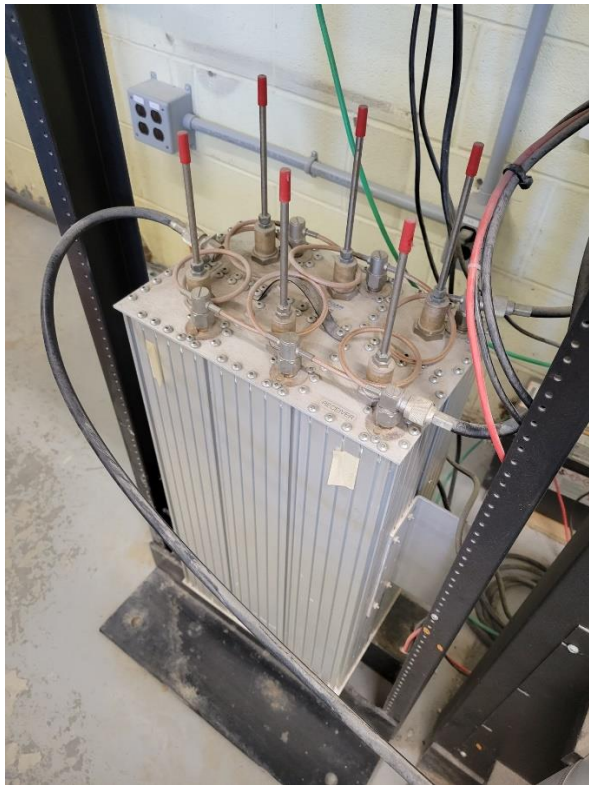


Figure 6 Tiverton location



Figure 7 Tiverton location



Figure 8 Tiverton location



Figure 9 Tiverton location



Figure 10 Kincardine location



Figure 11 Kincardine location



Figure 12 Kincardine location



Figure 13 Kincardine location



Figure 14 Kincardine location



Figure 15 Kincardine location

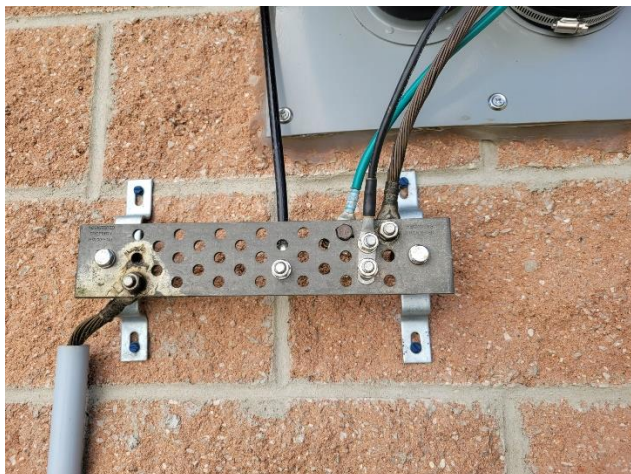


Figure 16 Kincardine location

Question #5: Is there space in existing or for new racks to house the battery back-up system?

Answer #5: We believe so. Additional space could be provided for additional racking/equipment.

Question #6: What is the required retention of the battery back-up system in hours?

Answer #6: 4-6 hours

III) RFX Revisions:

All information provided below forms part of the RFX document and is deemed to be included in your Bid.

IV) Clarifications:

The addendum will form part of the RFQ-ES-2024-1 document.

All other terms and conditions of the RFQ document remain the same.

End of Addendum